



# The Moline EDGE



Equipment News for Wholesale Bakers

Issue 1009

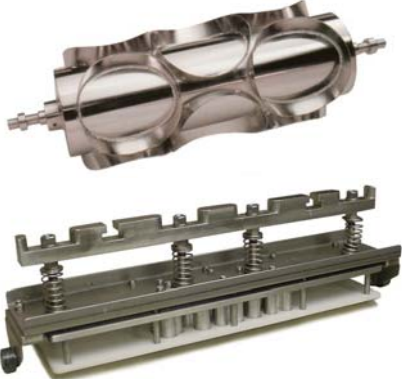
## Industrial Sheeting Lines



## High Capacity Donut Systems



## Specialty Cutters and Dies



## New LIBRA SHEETERS

### Now Standard on Moline Sheeting Lines

**Numerous Design Changes Improve Performance, Operator Ergonomics and Maintainability**

**Improved Dough Handling Features**  
Low Profile Design/Multiple Configurations

(Infeed, discharge and top guards shown removed.)



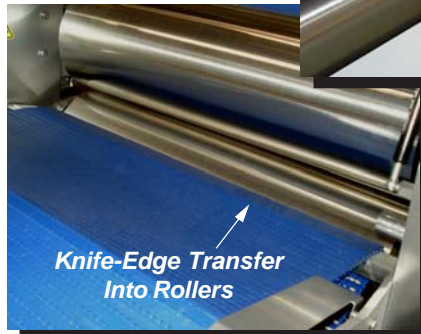
LIBRA 21-32R Sheeter (Dual, With Satellite Roller)



LIBRA 11-32R Sheeter (Single)

### Easy to Operate, Clean and Service

Over-Center Clamps Allow Easy Removal of Sheeting Roller Scrapers



Knife-Edge Transfer Into Rollers

Handle Soft Dough Easily - Use Less Flour



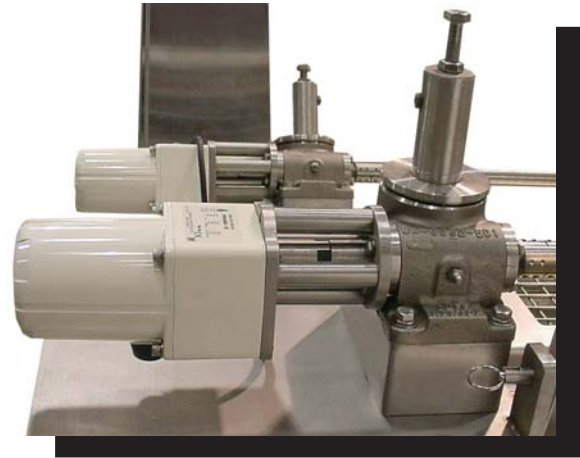
Perforated Guards for Online Monitoring

Continued on back...

# ***Standard Moline Industrial Duty Design and Construction***



*Oversized Gearbox Drives and Piloted Bearings*



*Powered and Precise Roller Gap Adjustment*



*Heavy Steel Plate / Continuous Sanitary Welds*