



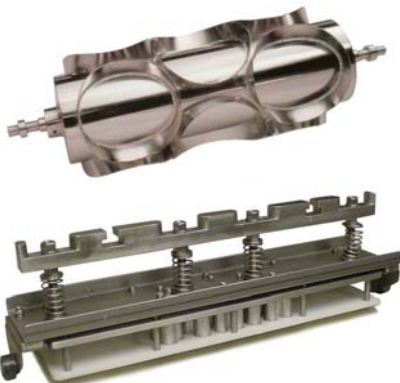
Industrial Sheeting Lines



High Capacity Donut Systems



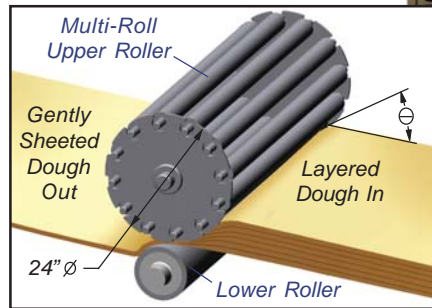
Specialty Cutters and Dies



High Capacity Sheeting

New GALAXY Sheeter is Large and Gentle

The industrial design of the new GALAXY Sheeter features multi-roll technology on a massive 24" diameter platform.



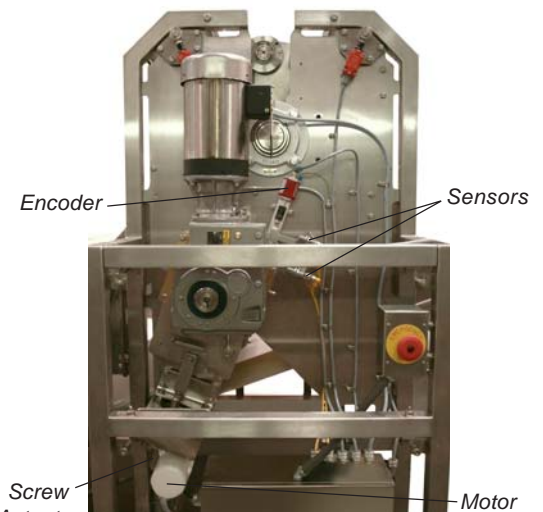
Large diameter multi-roll design offers rapid yet gentle dough reduction. The angle (\ominus) of attack, as dough enters the sheeting rollers, is minimized and surface contact increased compared to smaller sheeters.



3.5" Diameter Rollers and Bearings

The rugged 3.5" diameter rollers and outboard bearings are ideal for wide lines and for easy maintenance.

The powered roller opening system allows fast adjustment of roller gap through the operator interface. A linear encoder ensures precise calibration and operator feedback.



Powered Roller Opening System



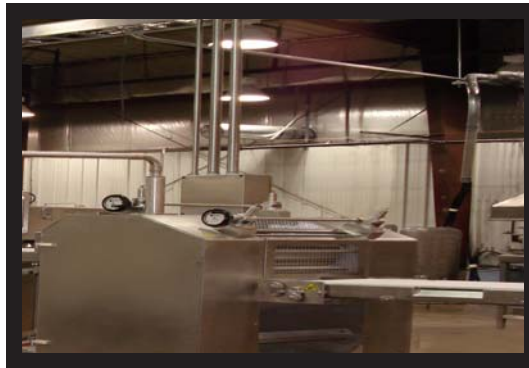
114 South Central Avenue
 Duluth, Minnesota, USA, 55807
 phone: 218-624-5734
 www.moline.com

PRSR STD
 U.S. POSTAGE
 PAID
 PERMIT NO. 40
 DULUTH, MN

ATTN ??????????????
 ADDRESS - Line 1
 ADDRESS - Line 2
 ADDRESS - Line 3

- Moline Test Facility -

The Moline Test Bakery is a state of the art facility used for both private and customer-based product evaluation, formulation and equipment process testing. Our experienced staff provide the assistance you need to develop new products and test new equipment concepts. A test report is sent to your facility within two weeks of test completion.



Schedule a Demo Today!